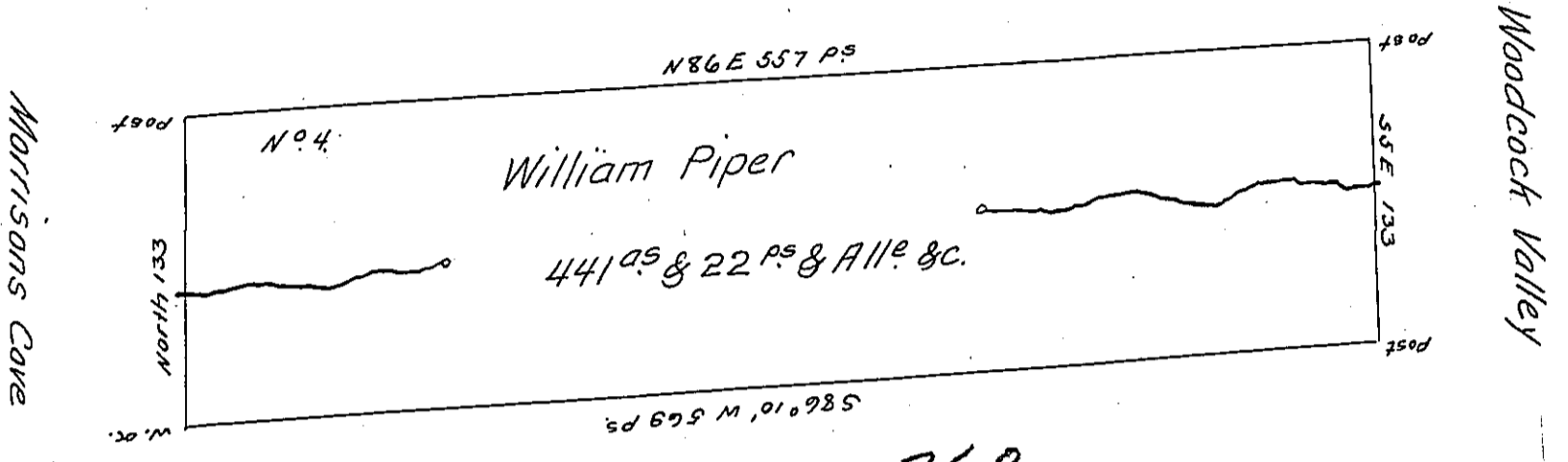


D-26-159
No. 5. Isabel Davis



C-76-260
John Hardin

Situated in Hopewell and Woodberry Townships, Bedford County. Contain-
ing 441 acres and 22 perches & the usual Allowance of six per Cent for
Roads Highways &c. Surveyed the 14th day of October 1794 on Warrant
Dated the 19th day of September 1794.

George Woods Jun^r. D. S.

To Daniel Brodhead Esq^r. S. G.

IN TESTIMONY that the above is a copy of the original remaining on file in
the Department of Internal Affairs of Pennsylvania, made
conformably to an Act of Assembly approved the 16th day of
February, 1833, I have hereunto set my Hand and caused
the Seal of said Department to be affixed at Harrisburg,
this eleventh day of June 1906.

Loac D. Brown
Secretary of Internal Affairs.